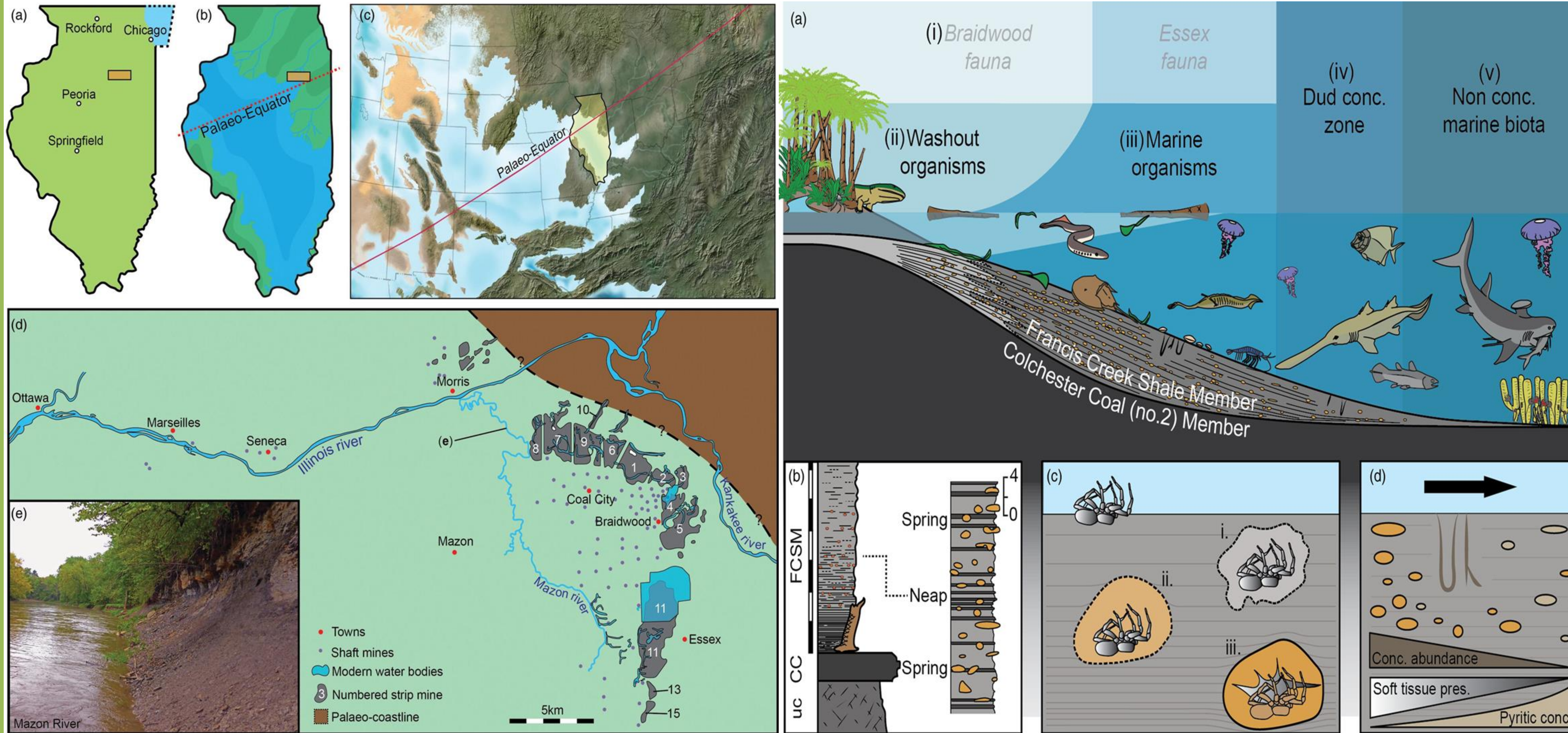


The Mazon Creek Lagerstätte and Paleozoic Ecosystems

1. The Site:

Journal of the Geological Society, Clements, T., et al. 2018

1. Illinois was located at the Paleoequator and was covered by a mix of Marine and Freshwater. Due to transgression (sea level rise) it allowed for ideal an ideal environment to produce Lagerstatte, which are highly preserved fossils (specifically with its organic components).

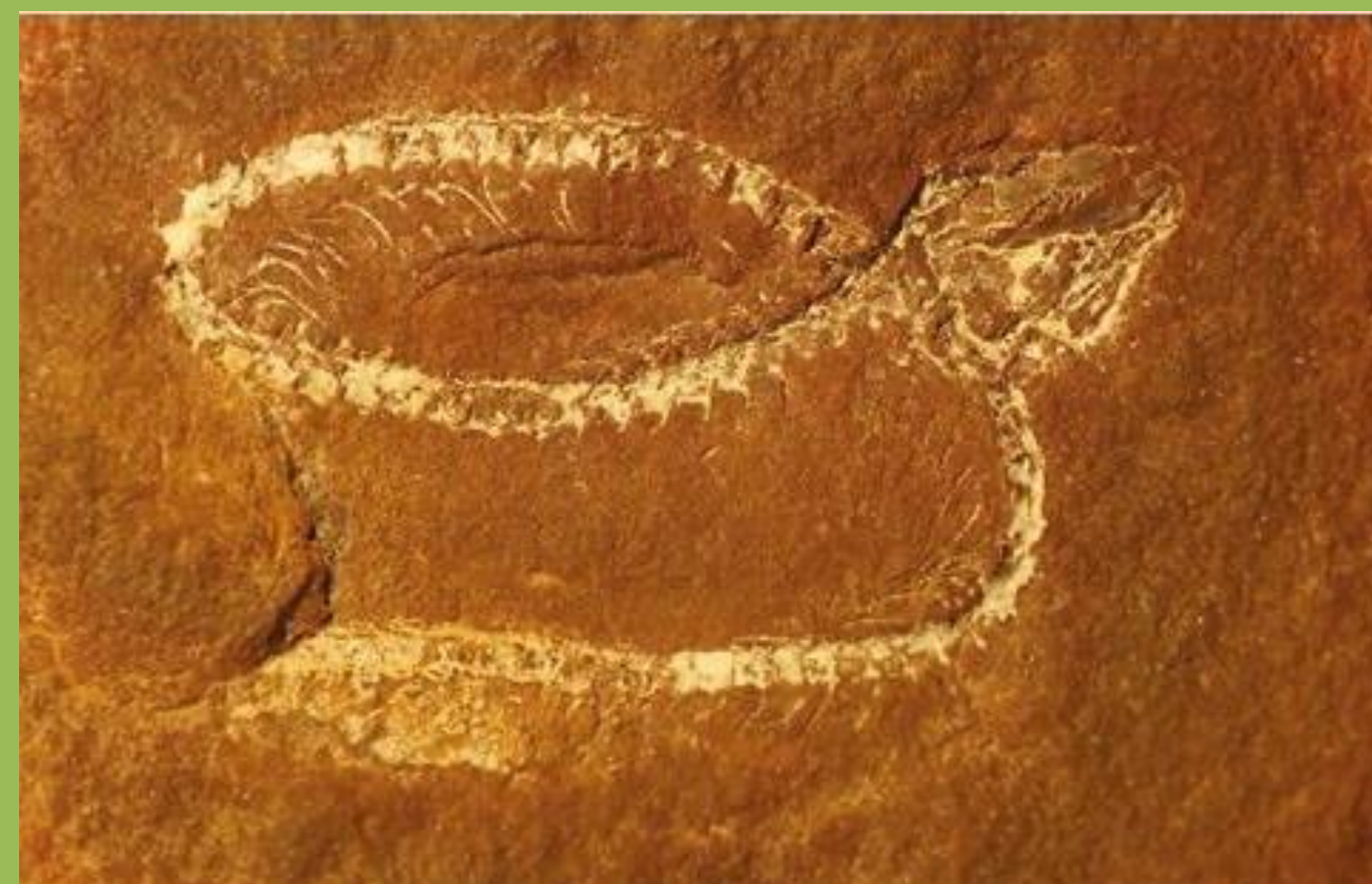


(Clements, T., et al. 2018)

3. Recent Discoveries:

Zoological Journal of the Linnean Society, Tripp, M, 2022

Infernovenator steenae

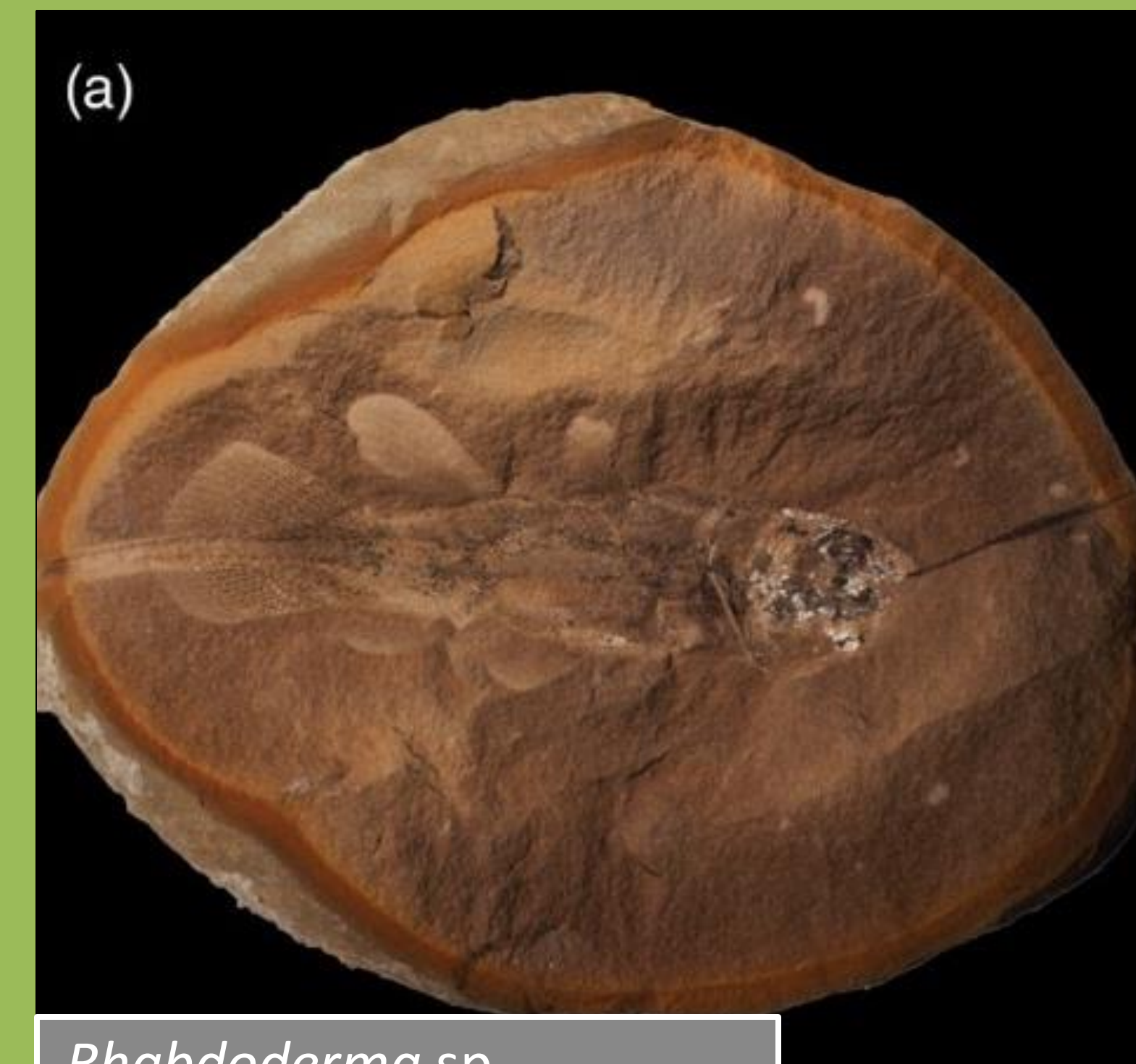


(Mann et al. 2019)

3. A new serpentine was discovered that provided insights for morphological diversity for lysorophians.

2. Fossil Diversity:

Journal of the Geological Society. Clements, T., et al. 2018



Rhabdoderma sp.

Modified from (Clements, T., et al. 2018)



Polychaete *Esconites zelus*

Priapulid *Priapulites konecniorum*



Actinopterygian *Platyosomus circularis*



Alethopteris sp.