

(Greenfield, T. 2020)

THE MYSTERY OF THE TAXON: ENDOCERIDA

Lived: Paleozoic

The shell:

Shell from NY = 3 meters, with an estimated complete length of 5.73 meters (Klug et al. 2015).

Anecdotal report of a 9.14 meter shell - destroyed in the field (Flower, 1955)



(Mironenko, 2018)

Suspension feeders

Specialized in feeding on plankton, and the largest of them were giant suspension feeders (webs between the arms) (Mironenko, 2018)

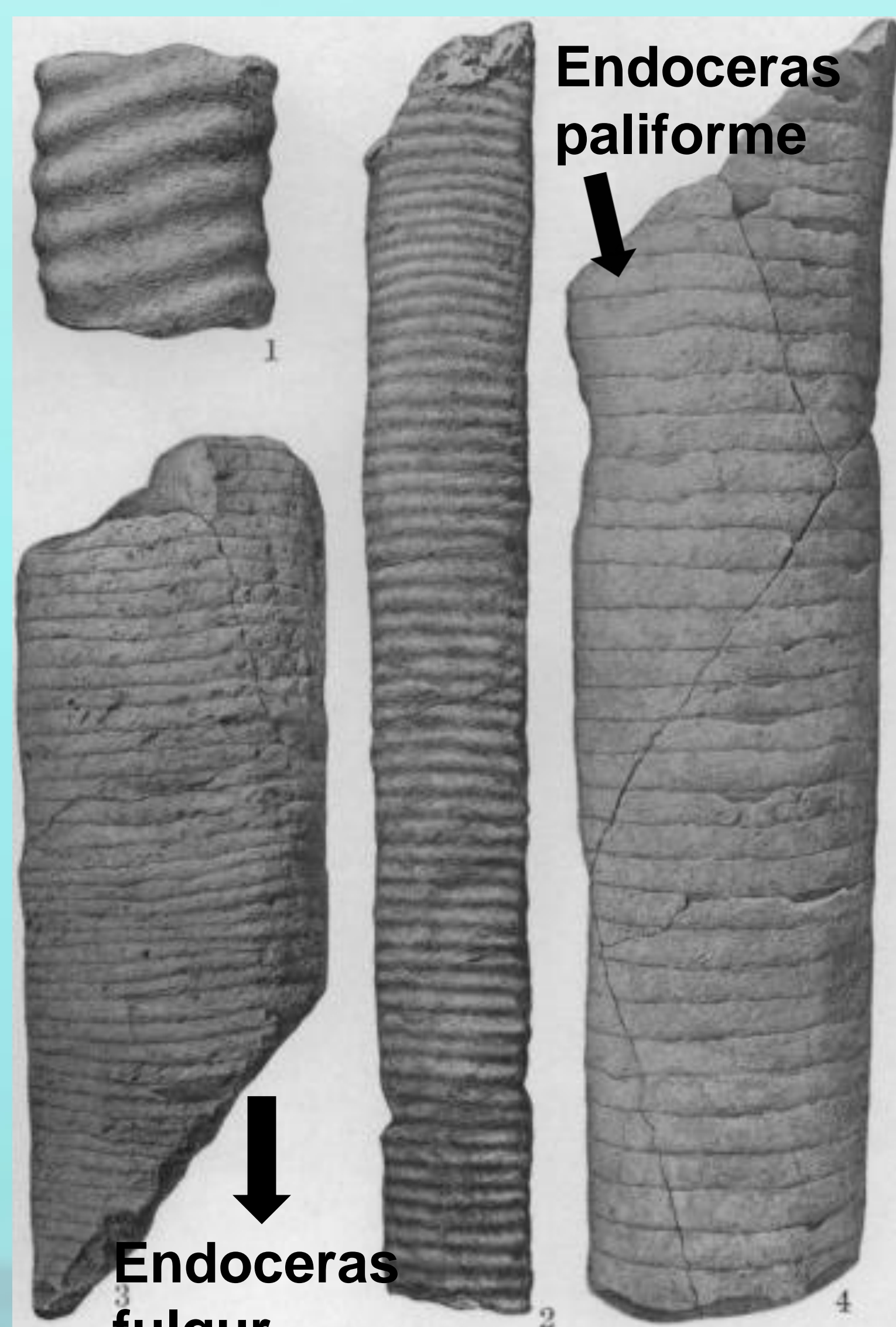
Apex predators

Evidence for endocerid predation on trilobites supports apex predator (Greenfield, 2020)

Extinct nautiloid order
Early Ordovician to
~Late Silurian.

Widespread living close to the sea floor. Six families?:

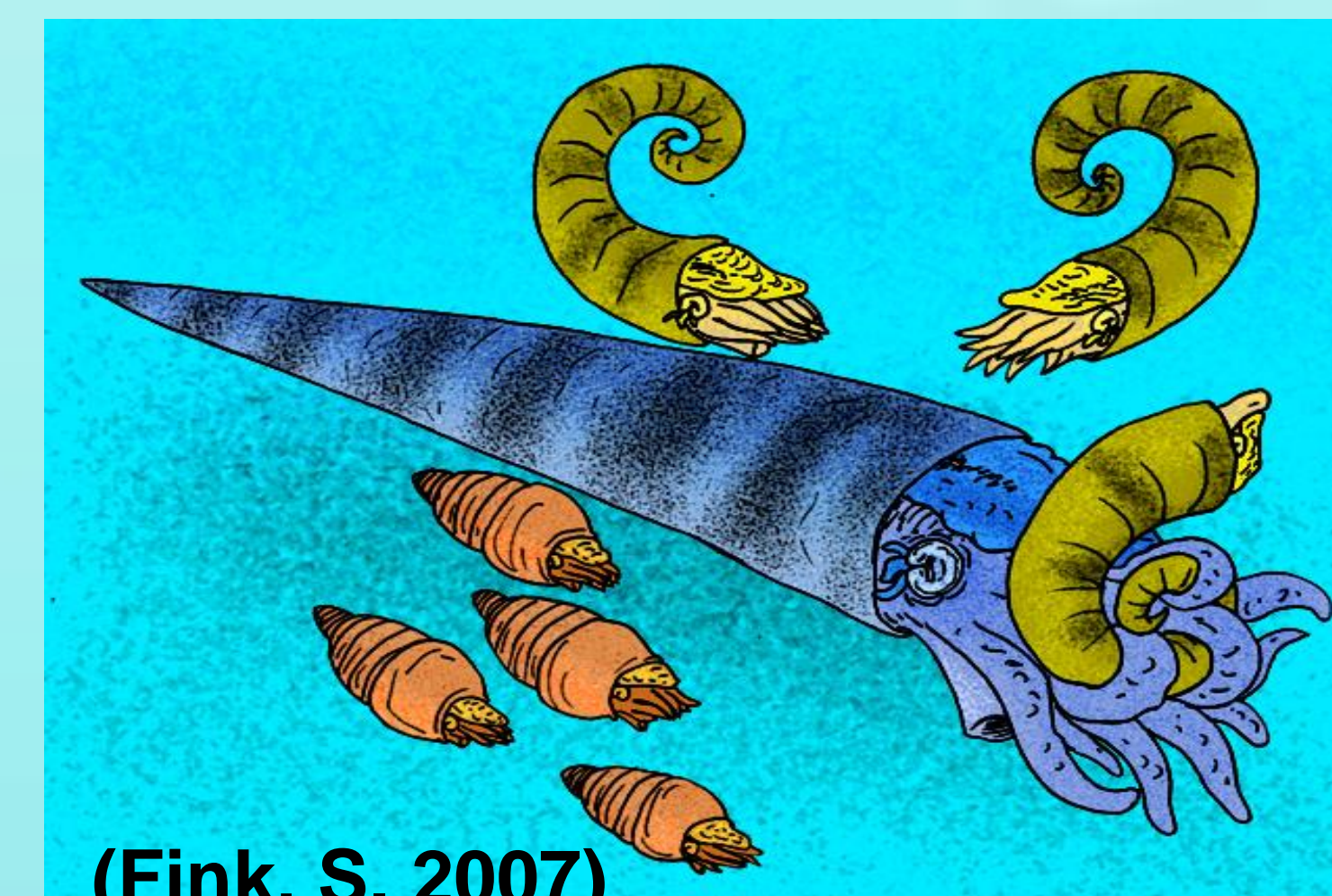
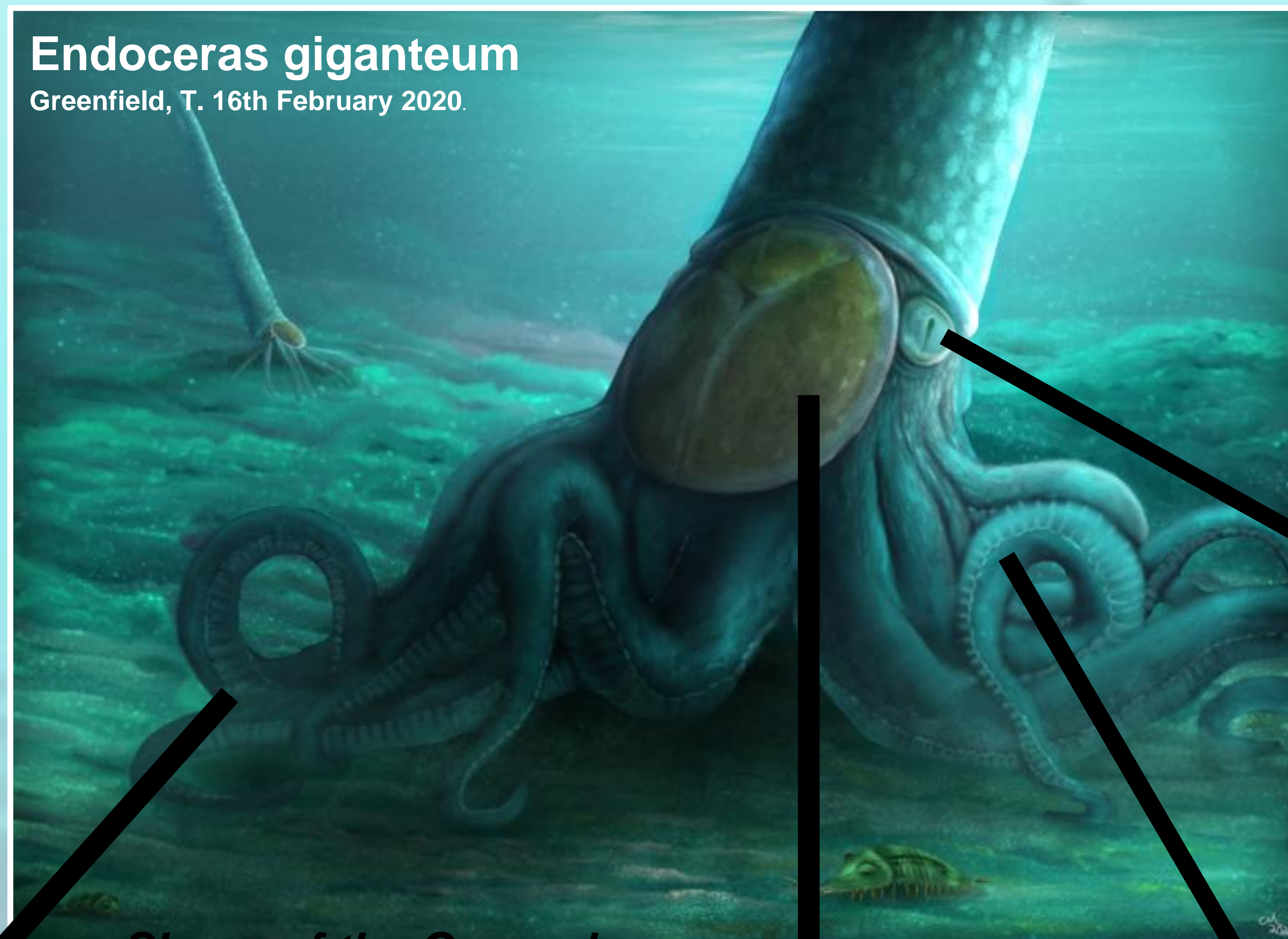
Cyrtendoceratidae,
Endoceratidae,
Proterocameroceratida
e, Yorkoceratidae,
Suecoceratidae,
Thylacoceratidae
(Evans & King 2012)



(Miller & Furnish, 1937)

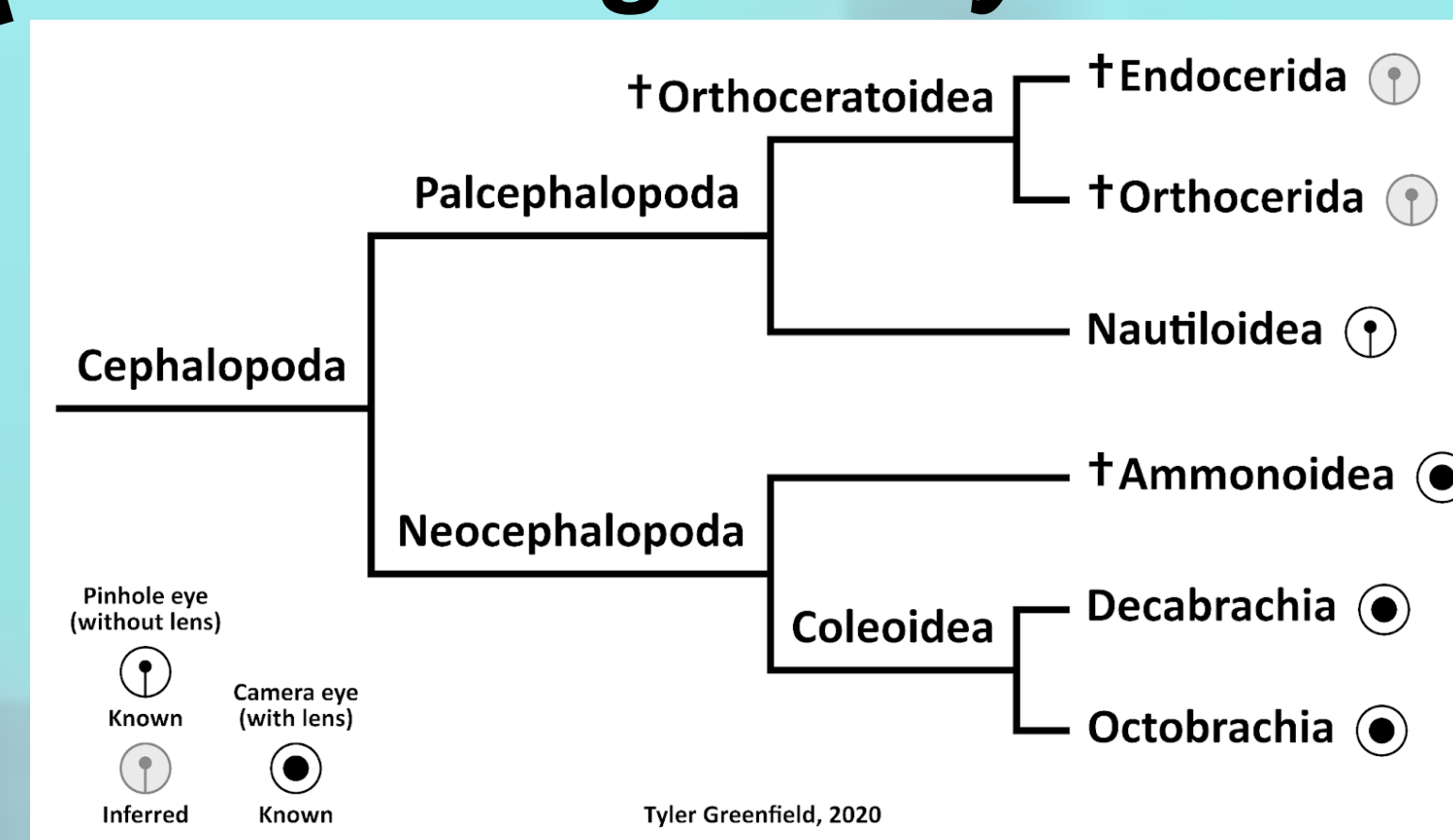
Endoceras giganteum

Greenfield, T. 16th February 2020.



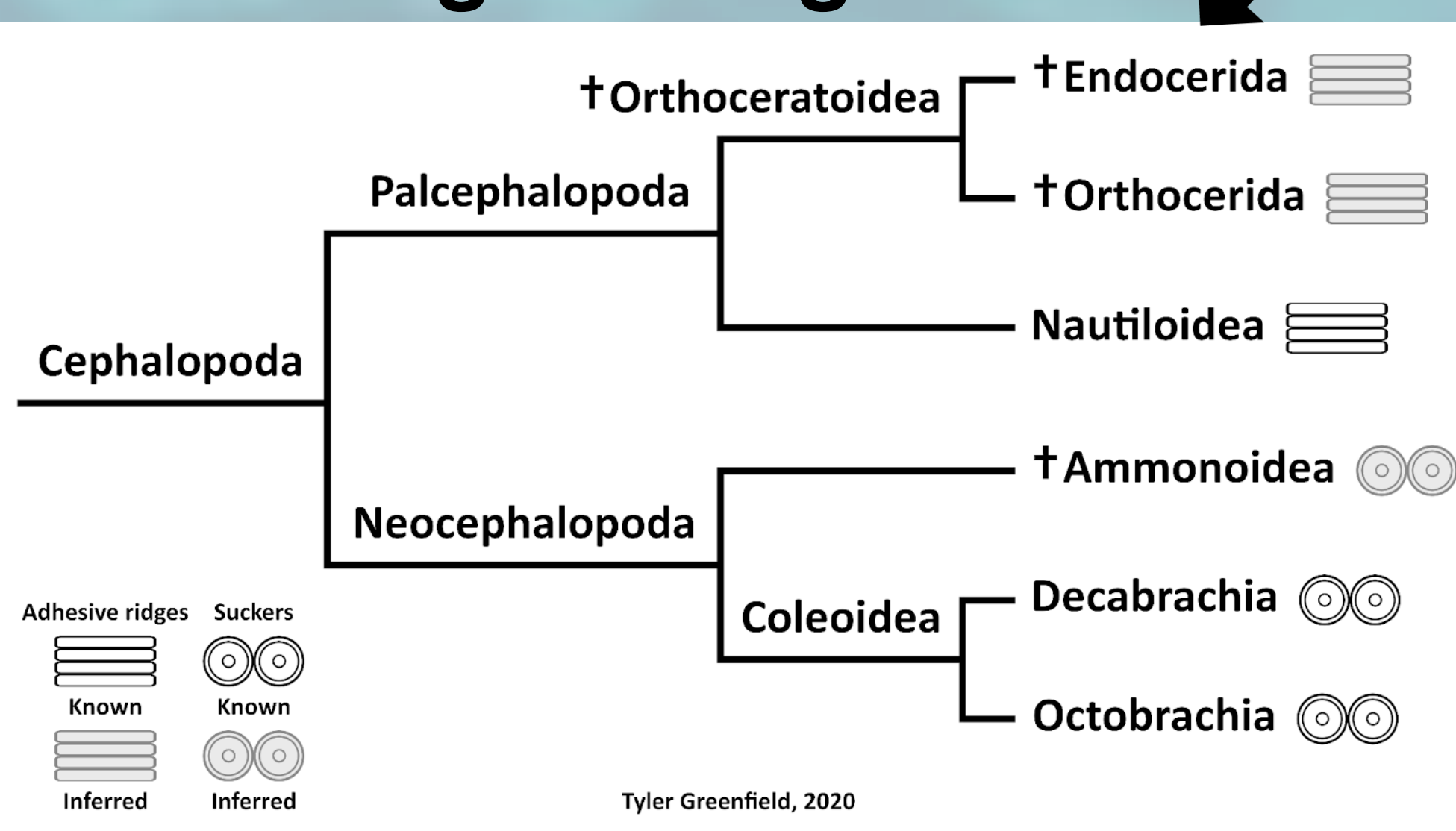
(Fink, S. 2007)

Bracketing for eyes:



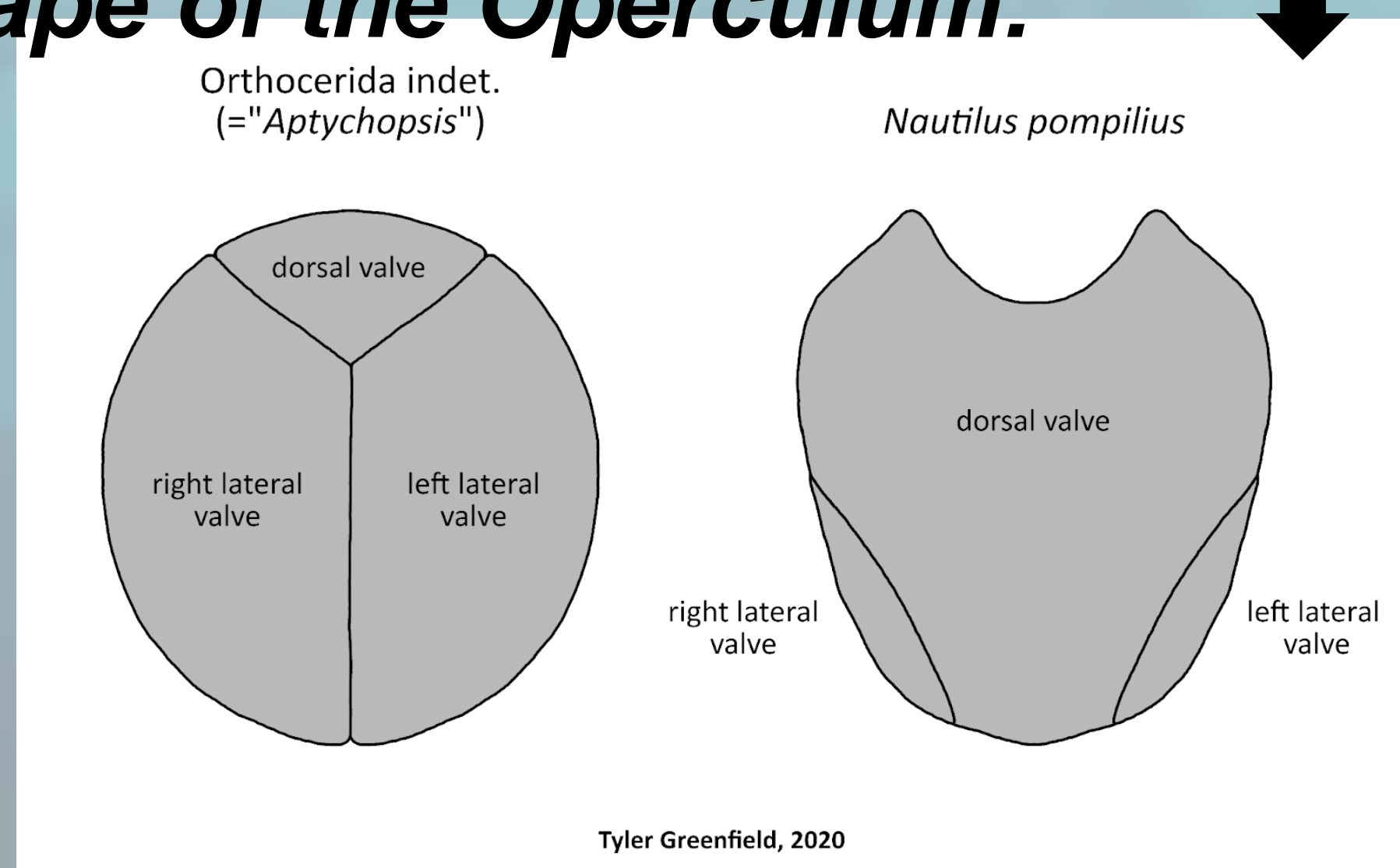
Tyler Greenfield, 2020

Bracketing for ridges:



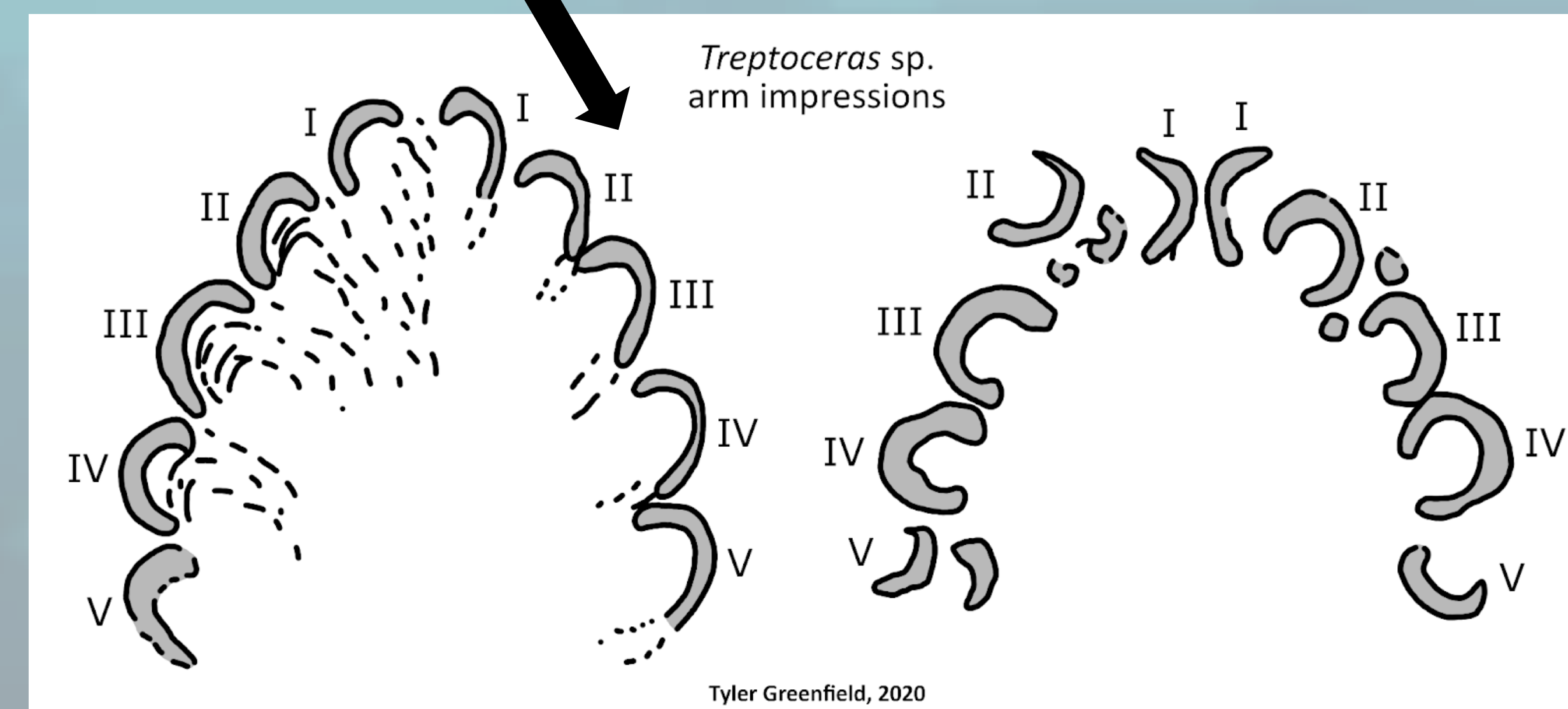
Tyler Greenfield, 2020

Shape of the Operculum:



Tyler Greenfield, 2020

Evidence for 10 arms:



Tyler Greenfield, 2020