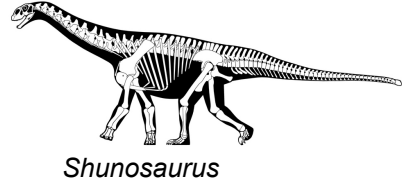
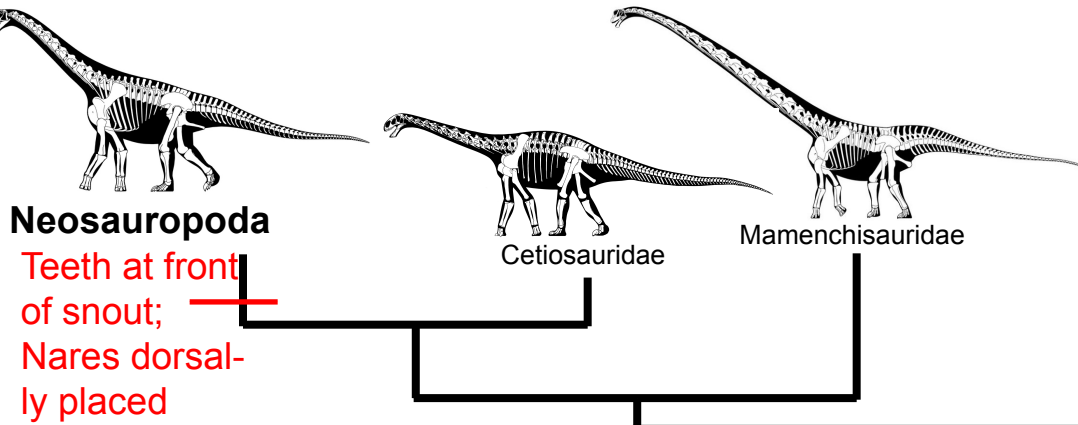


# SAUROPODOMORPHA

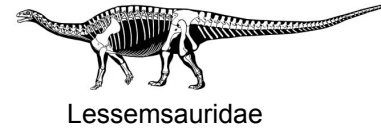
## Neosauropoda

Teeth at front of snout;  
Nares dorsally placed



## Eusauropoda

Further size increase; Rounded snout; tooth-to-tooth occlusion; wide gape (loss of cheeks?); 12 or more cervicals; Modified manus and pedes



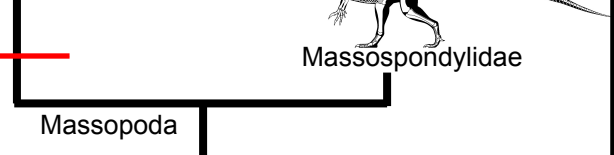
## Sauropoda

Shortened snout; Obligate quadrupedality; Metatarsal V weight-bearing



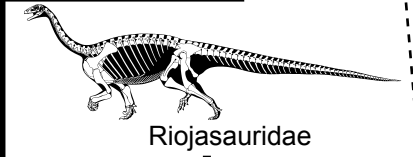
Further size increase; some quadrupedality

## Anchisauria



## Massopoda

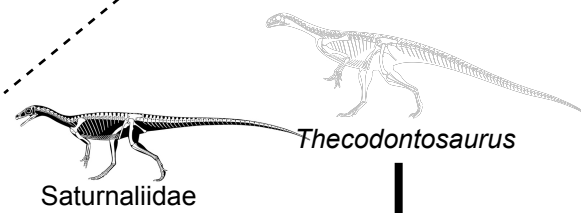
## Plateosauria



Quadrupedality

## "basal sauropodomorphs"

Increased body size; even longer neck; shortened distal hindlimb



## Efraasia

Cheeks?

## SAUROPODOMORPHA

Decreased skull size; tall leaf-shaped teeth; long neck; possible small beak on dentary



## Saurischia